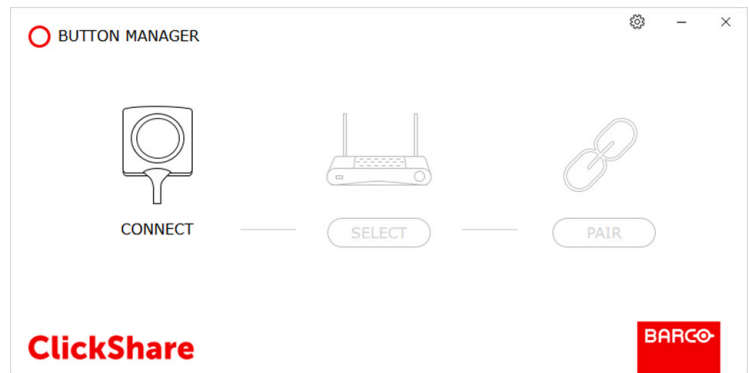


ClickShare Button Manager



User Guide

Product revision

Software Revision: 2.1

Registered address: Barco NV
President Kennedypark 35, 8500 Kortrijk, Belgium
www.barco.com/en/support
www.barco.com

Barco NV
Beneluxpark 21, 8500 Kortrijk, Belgium
www.barco.com/en/support
www.barco.com

Copyright ©

All rights reserved. No part of this document may be copied, reproduced or translated. It shall not otherwise be recorded, transmitted or stored in a retrieval system without the prior written consent of Barco.

Trademarks

Brand and product names mentioned in this manual may be trademarks, registered trademarks or copyrights of their respective holders. All brand and product names mentioned in this manual serve as comments or examples and are not to be understood as advertising for the products or their manufacturers.

Open Source Software provisions

Open source component

Open source license

QT Keychain - version 0.8.0 (release 2017-04-19)	https://github.com/frankosterfeld/qtkeychain/
Crypto PP – version 5.6.2	https://www.cryptopp.com/License.txt
OpenSSL – version 1.0.2k	https://www.openssl.org/source/license.html
QT – version 5.8	https://www1.qt.io/licensing/

Table of contents

1	Introduction	7
1.1	About ClickShare Button Manager	8
1.2	Required hardware	8
1.3	About remote pairing operations	8
1.4	Installation of ClickShare Button Manager	8
1.5	Before remote pairing	9
1.6	Starting up the ClickShare Button Manager	10
2	Using the ClickShare Button Manager	13
2.1	Information about the ClickShare Button Manager	14
2.2	Detecting Buttons	14
2.3	Selecting Base Unit	15
2.4	Pairing Buttons	17
2.5	Using a general password	18
	Index	21

Introduction

Overview

- About ClickShare Button Manager
- Required hardware
- About remote pairing operations
- Installation of ClickShare Button Manager
- Before remote pairing
- Starting up the ClickShare Button Manager

1.1 About ClickShare Button Manager

Overview

The ClickShare Button Manager is a stand alone software application to manage your Buttons on most of the types of ClickShare Base Units via your computer. Your computer can pair up to four Buttons at once with a known Base Unit. It is not necessary anymore to physically connect the Button with the Base Unit to pair it. This functionality makes it easy to use any Button with any Base Unit. Different Base Units can be added to the ClickShare Button Manager. These units can be added manually when on the same network as the computer.

Supported Base Units

ClickShare Button Manager supports:

- CS-100
- CSE-200
- CSE-800

Supported Buttons

ClickShare Button Manager supports:

- Button Gen2 only in security level 1
- Button Gen3, in security level 1 or 2

Platforms

Only available on Windows platforms

1.2 Required hardware

Minimum PC requirements

- CPU: Intel Pentium Dual Core E2140–2 * 1600 MHz (or equivalent AMD Athlon 64 X2 3800+ - 2 * 2000 MHz).
- Memory: 1 gigabyte (GB) RAM (32-bit) or 2 GB RAM (64-bit).
- OS: Windows 7 SP1, Windows 8, Windows 8.1 and Windows 10 support for both 32 and 64 bit.

1.3 About remote pairing operations

Limitations

- Maximum 4 Buttons can be paired simultaneously from a Button Manager Client application instance.
- Only one Button Manager Client is allowed per user.
- A Base Unit only accepts 8 simultaneously Button Manager Client connections.
- If the Base Unit is sharing, only 2 Buttons are allowed to be paired.

1.4 Installation of ClickShare Button Manager



Installation can only be done on a Windows based computer.

Installation

1. Download the latest version of ClickShare Button Manager from Barco's website, <https://www.barco.com/en/product/clickshare-button-manager>.
2. Open the zip file and double click on the install file *ClickShare_Button_Manager_02_01_00_2018_06-0017_Setup_win.msi*.

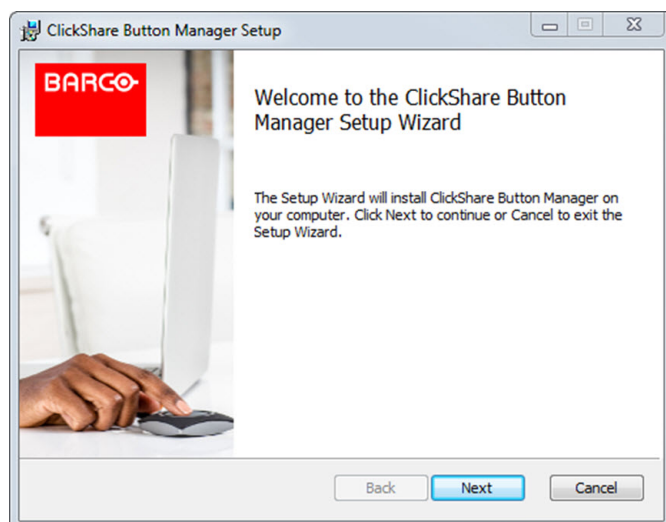


Image 1-1: Welcome page setup window

3. Click **Next** to start the installation process. Read and accept the license agreement and follow the instructions as given in the setup wizard.

When finished, ClickShare Button Manager is added to the list of programs.

1.5 Before remote pairing

About Base Unit setup

Before remote pairing is possible for a Base Unit, this function should be activated on the Base Unit itself. While enabling remote pairing a password must be entered which will be used by the ClickShare Button Manager.

Base Units CS-100, CSE-200 and CSE-800 with firmware version 1.06 or higher support the remote pairing functionality.

How to enable

1. Login to the corresponding Base Unit.
2. Browse to *Wi-Fi & Network*, select *Services*.

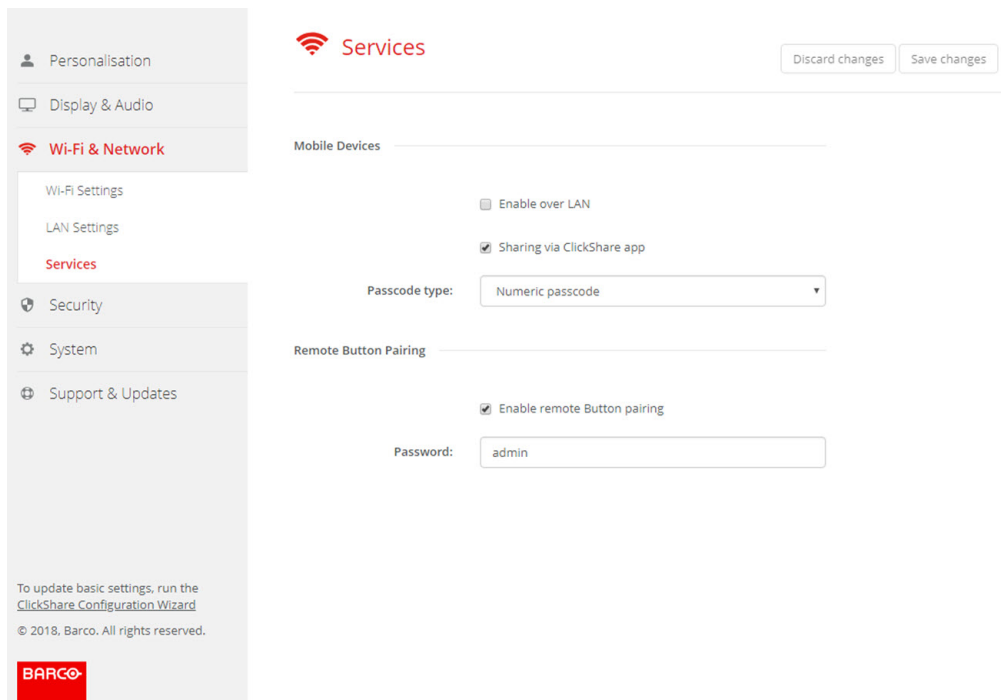


Image 1-2

3. In the *Remote Button Pairing* pane, check the check box in front of *Enable remote Button pairing*.
4. In the password input field next to *Password*, enter the pairing password to be used by the ClickShare Button Manager.

1.6 Starting up the ClickShare Button Manager

How to start up

1. Click on the Window's Start button and select ClickShare Button Manager out of the list of programs.

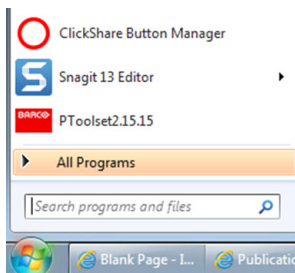


Image 1-3

The ClickShare Button Manager start page is shown.

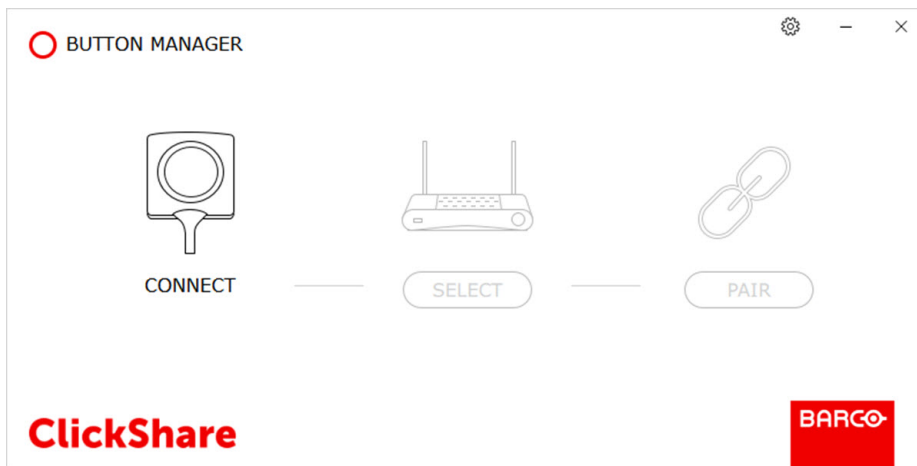


Image 1-4: Start up screen

Using the ClickShare Button Manager

2

Overview

- Information about the ClickShare Button Manager
- Detecting Buttons
- Selecting Base Unit
- Pairing Buttons
- Using a general password

2.1 Information about the ClickShare Button Manager

Overview

The ClickShare Button Manager can show the version information and the link to logging location

How to display

1. When the ClickShare Button Manager is running, click on the Settings icon (1).

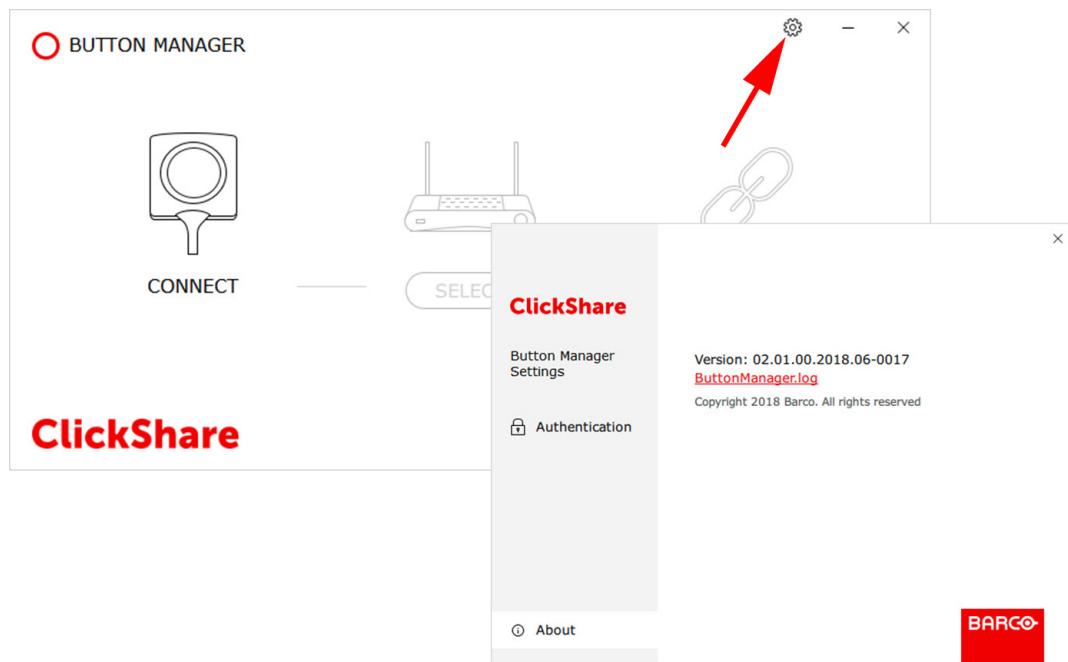


Image 2-1: Version and logging

The ClickShare Button Manager settings window opens.

It indicates the installed version and a link to ButtonManager log.

2.2 Detecting Buttons

How to detect

1. Plug your Buttons you want to use in the USB ports of your computer.
The number of Buttons that can be connected is limited to the number of USB ports available on the computer. ClickShare Button Manager can detect 4 Buttons at once.
The detected Buttons are automatically added below CONNECT with their serial number.

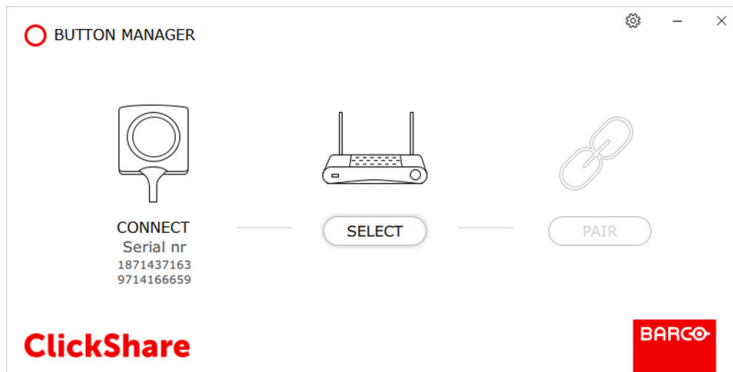


Image 2-2: Buttons connected

2.3 Selecting Base Unit

How to select

1. Once the Buttons are detected, click **SELECT** to add a Base Unit (1).

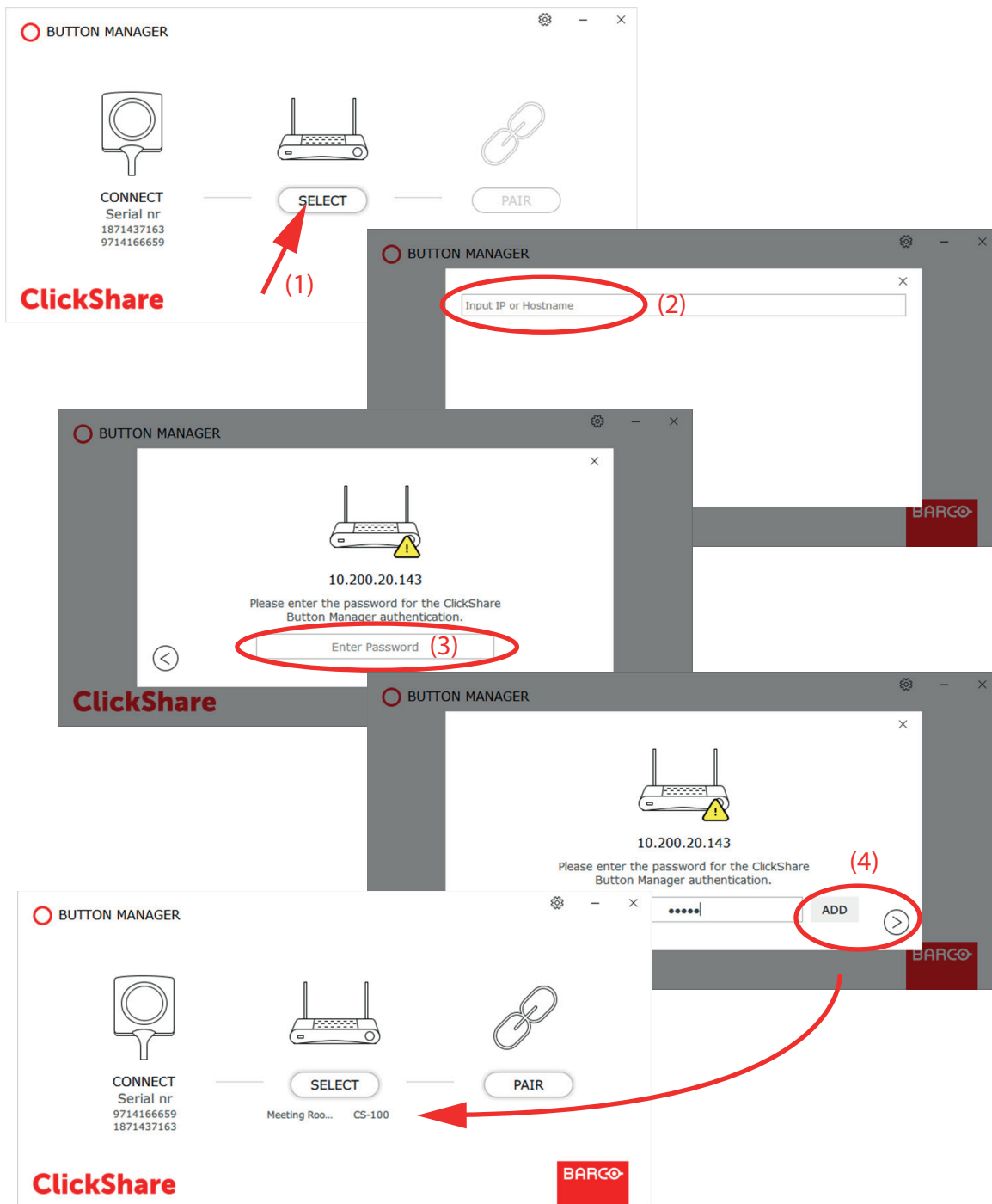


Image 2-3

2. Enter the IP address or hostname of the Base Unit (2) to pair with and push **ENTER**.
3. Enter the password for the ClickShare Button Manager authentication (3).
This is the same password as set in the Base Unit's configurator when selecting *WiFi & Network* → *Service* → *Remote Button pairing*.
4. Click **Add** or on the right arrow (4).
The Base Unit is added to the list and pairing with the new entered Base Unit can be started.
or
when there are already Base Units in the list, select the Base Unit to pair with



Image 2-4



Note: The built up list of Base Units remains available as long as ClickShare Button Manager is running.

The Base Unit hostname and type is added to the list of Base Units to which ClickShare Button Manager has previously connected to.

2.4 Pairing Buttons

How to pair

1. Click **Pair** to start pairing the connected Buttons.

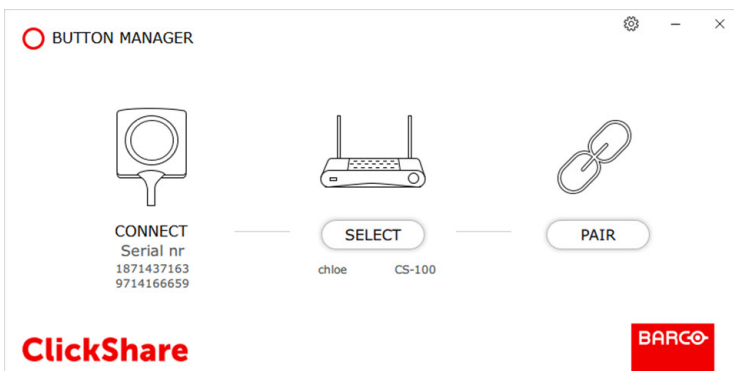


Image 2-5: Start pairing

A progress bar is displayed. This process can take a few minutes to complete.

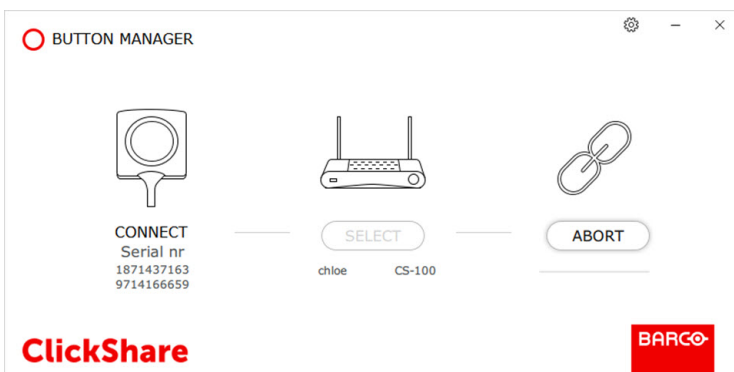


Image 2-6: Pairing in progress

Alongside to the pairing parameters, software updates of the Button is performed at the same time.

During the pairing the LED of the Button is blinking white.

To Abort the pairing process, click **ABORT**.

When the pairing is finished the LED ring becomes static red or static white. A pairing status window is displayed.

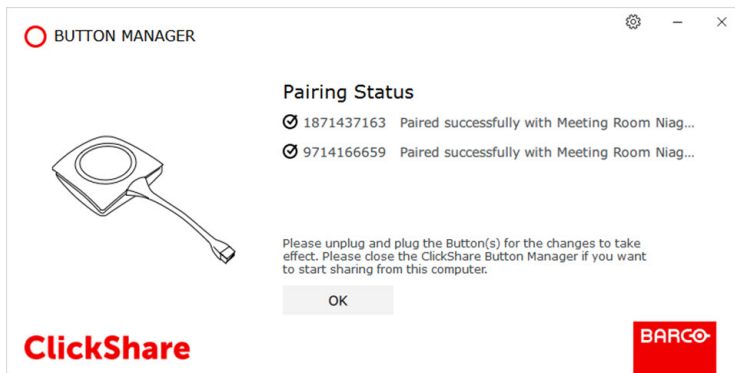


Image 2-7: Pairing status

If some error occurred during pairing, the button will blink red, and the status window will show additional information about the reason the pairing failed.

You have to unplug the Buttons from your computer. The Buttons are ready to be used.

Pairing of a new set of Buttons is now possible.



When ClickShare Button Manager is launched, ClickShare Launcher and ClickShare Client are automatically closed. Before you can use any Button for sharing on your computer, you have to close ClickShare Button Manager first.

2.5 Using a general password

About a general password

When your network contains multiple Base Units and you have to pair Buttons frequently, it can be handy to use a general authentication password to allow pairing. That authentication password can then be used as general authentication password in your ClickShare Button Manager. Each time you have to pair some Buttons with one of these Base Units in the network you do not have to enter the password again.

How to define a general password

1. Define the same password on all your Base Units on your network. See “Before remote pairing”, page 9 for more information.
2. When the ClickShare Button Manager is running, click on the Settings icon (1).

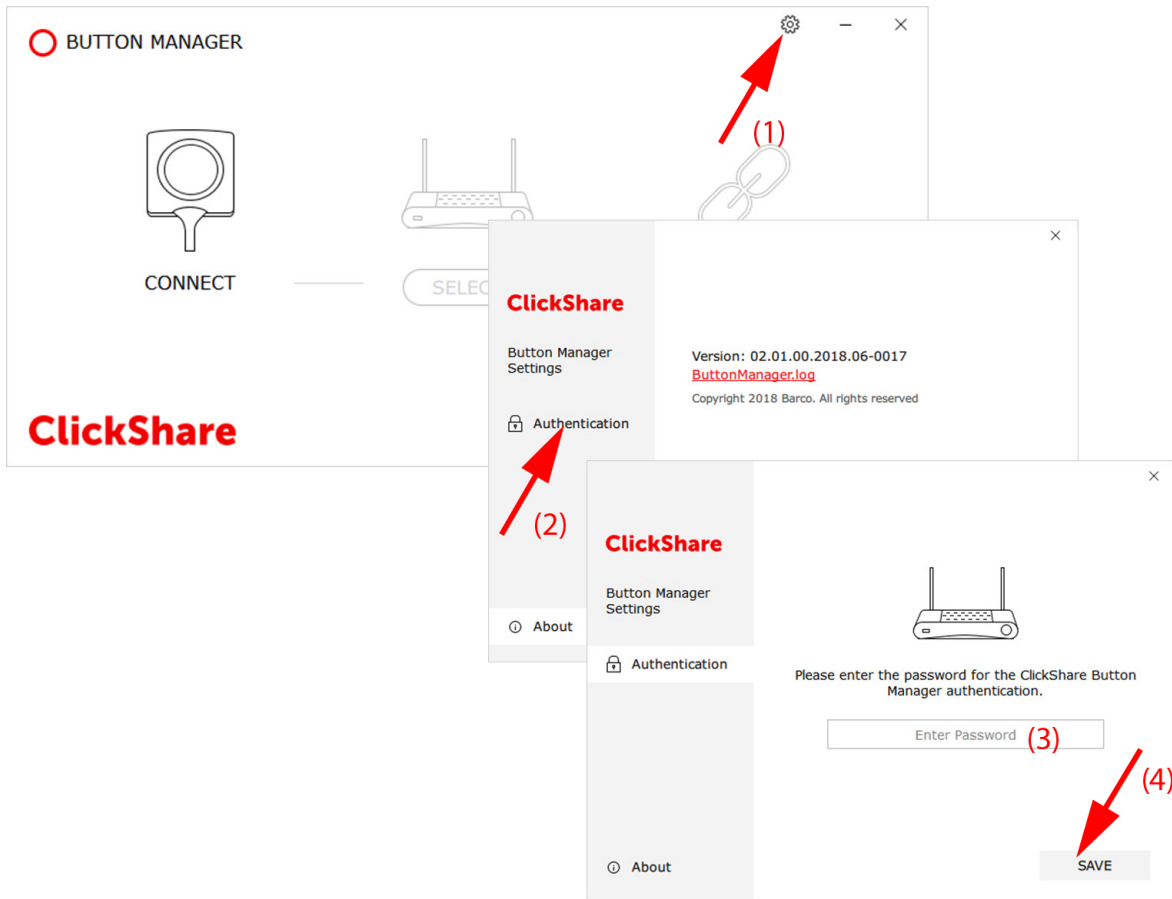


Image 2-8: Set general password

The ClickShare Button Manager Settings window opens containing the Authentication tab where you can set the general password.

3. Click on **Authentication** (2)
4. Click in the password field and enter a general password (3).
5. Click **SAVE** (4).

Each time you start a pairing session the password in the Base Unit will be compared with the general password in the ClickShare Button Manager.

When it is the same, pairing can be started without the user being prompted to provide the password.

When there is no match, the authentication window will pop-up.

Index

B

- Button manager 18
 - Before remote pairing 9
 - Installation 8
 - Remote pairing 8
 - Startup 10
- Button manger
 - Required hardware 8

D

- Detecting Buttons 14

H

- How to use 13
 - Detecting Buttons 14
 - Information 14

I

- Introduction 7
 - About 8

P

- Pairing Buttons 17

S

- Select Base Unit 15

