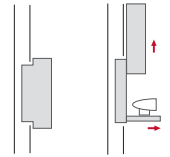


DynamicVision

Motorised wall mount for videoconference cameras



FEATURES

- Compatible with the most popular video conference cameras on the market
- RS-422 and Infrared controllable
- Customisable cover
- Maintenance free
- Easy to install

GENERAL

DynamicVision motorised camera mounts have been designed for wall integration.

Integrated motorised wall mount for video conference cameras and controls. Unveiling the camera upon request through RS-422, Infrared, contact closer Interface when needed, and storing it away when not in use, for a safe and controlled working environment and for protection of

the camera. The front enclosure moves vertically upwards (model AHDV01) unveiling the camera, the tray then moves the camera forward simultaneously. The front enclosure can optionally move downwards (model AHDV02)

TECHNICAL SPECIFICATIONS

Movement's Control

Up/Down Control	RS-422
	GPI contact closer
	IR remote control

Electrical

Low voltage <i>(external power supply)</i>	100-240Vac, 50/60Hz, 12Vdc
Power consumption	25W

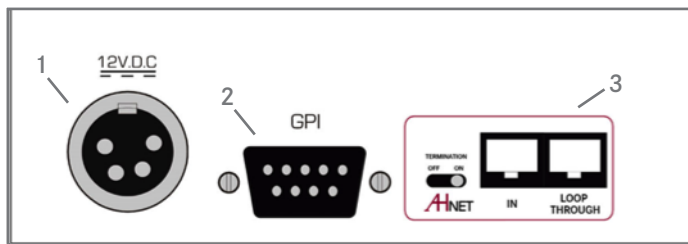
CERTIFICATIONS

- CE

WARRANTY

- 2 years general warranty

CONNECTIVITY PANEL



CONNECTIVITY

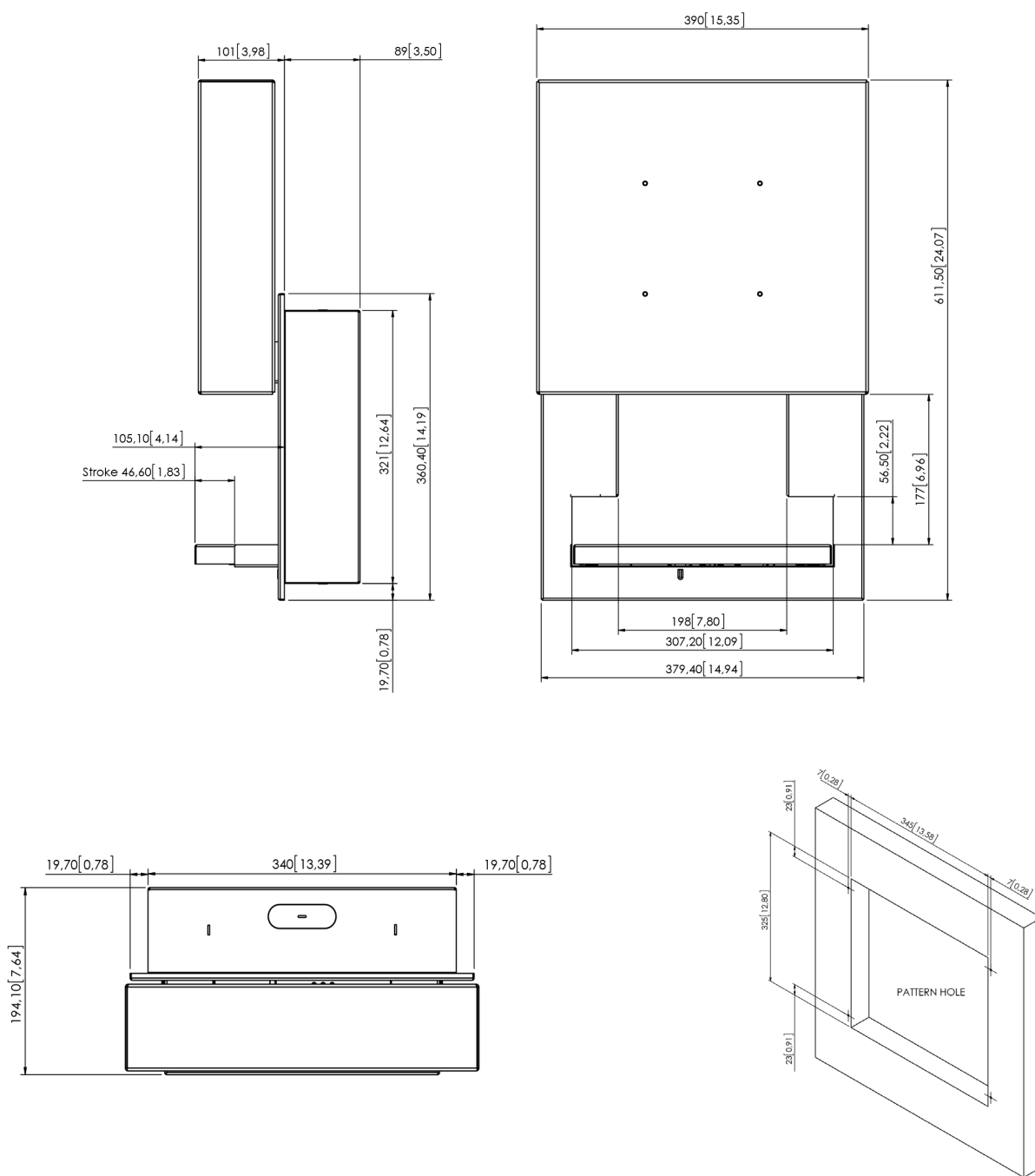
- 1- Power input
- 2- GPI control
- 3- AHnet control interface

ARCHITECT'S SPECIFICATIONS

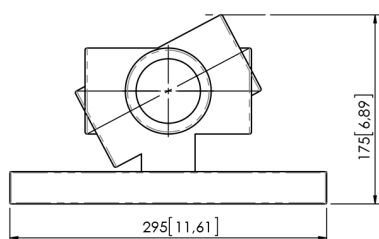
Low voltage professional motorized wall mount system for hiding conferencing cameras. The tray supporting the camera slides in and out for better viewing angle. Cover frame moving up and down. The cover frame can be veneered to match the interior design. Control by means of

a remote controller, contact closure inputs and integration with AHnet interface, allowing independent remote control of up to 30 units over a daisy-chain CAT-5 line.

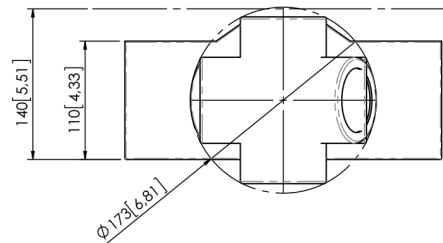
GENERAL DIMENSIONS



MAXIMUM CAMERA DIMENSIONS



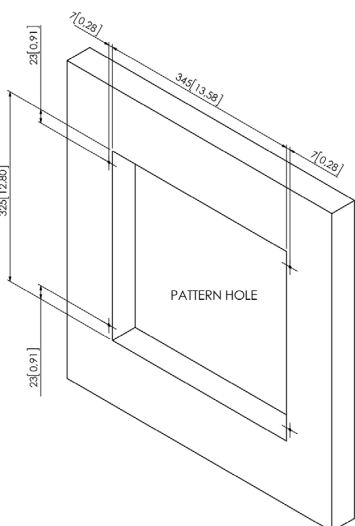
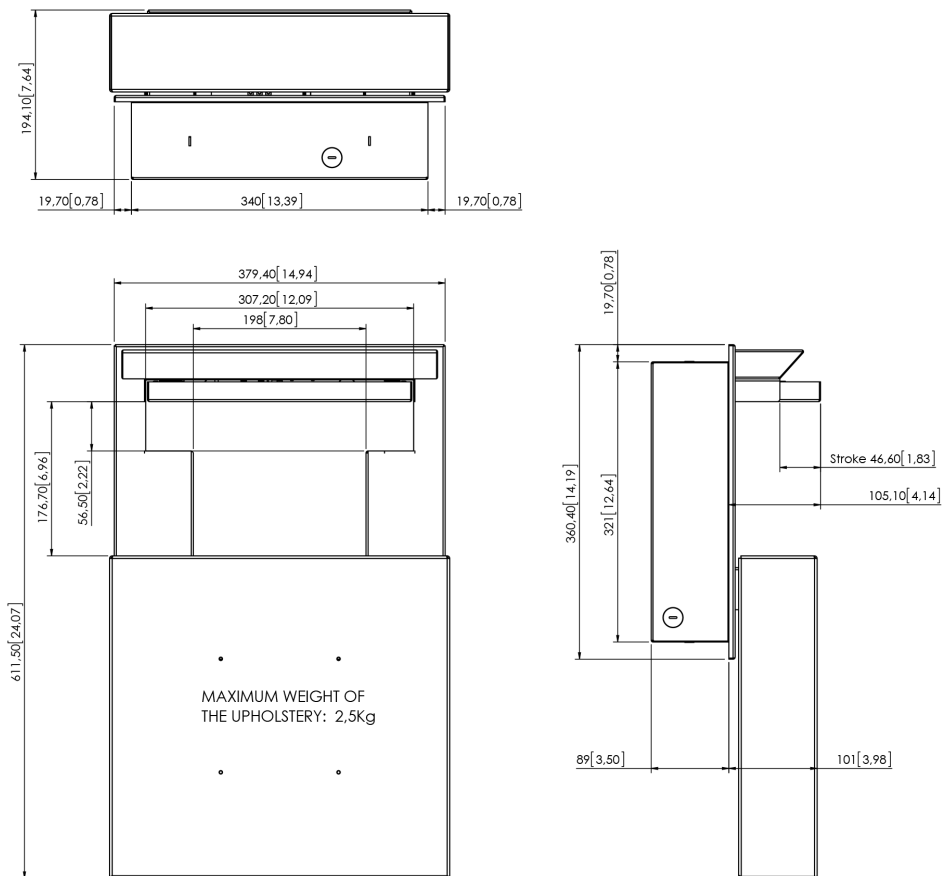
DIMENSION INCLUDING CONNECTORS



ARTHUR HOLM

Albiral Display Solutions SL · Fàtima, 25 Sant Hipòlit de Voltregà 08512 Bcelona, Spain · +34 938 502 376 · marketing@arthurholm.com
www.arthurholm.com

Arthur Holm is a registered brand of Albiral Display Solutions SL. Specifications subject to change without previous notice.



MAXIMUM CAMERA DIMENSIONS

