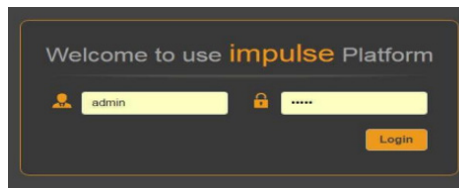


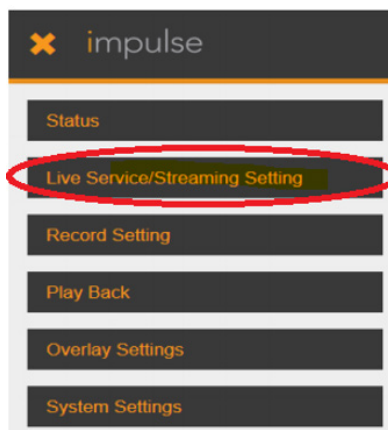
AVPro^{edge} impulse

Streaming to YouTube

1. CONNECT THE IMPULSE TO A MANAGEMENT PC/SERVER DIRECTLY, OR TO A NETWORK SWITCH.
2. THE IMPULSE DEFAULT IP ADDRESS IS 192.168.1.100. MODIFY THE IP ADDRESS OF THE MANAGEMENT COMPUTER OR IMPULSE TO ENSURE BOTH ARE IN THE SAME SUBNET RANGE.
3. OPEN A WEB BROWSER AND ENTER IMPULSE'S DEFAULT IP ADDRESS – THE BROWSER WILL CONNECT TO THE DEVICE. ONCE THE CONNECTION IS ESTABLISHED, A LOGIN PAGE WILL APPEAR. (DEFAULT USERNAME/PASSWORD: ADMIN/ADMIN)

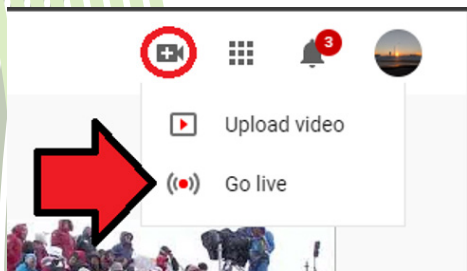


4. AFTER LOGIN, THIS ICON WILL APPEAR IN THE UPPER LEFT CORNER:  CLICK THIS ICON AND A DROP-DOWN MENU WITH OPTIONS WILL BE DISPLAYED. SELECT "LIVE SERVICE/STREAMING SETTING"

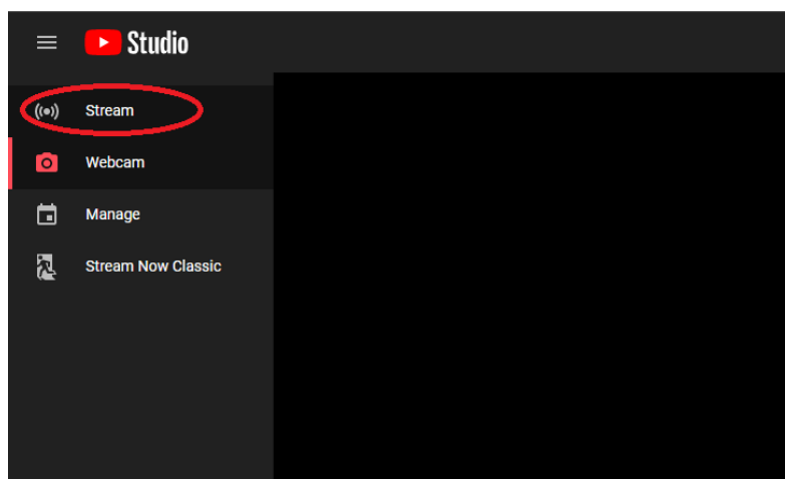


5. ON THE "LIVE SERVICE/STREAMING SETTINGS" PAGE, YOU WILL SEE THAT THERE ARE A COUPLE DIFFERENT OPTIONS. SELECT THE PROPER SETTING FOR YOUR INPUT (HDMI OR SDI IF YOU HAVE A PLUS MODEL). THEN, FOR THE MODE, SELECT MANUAL. THIS WILL GIVE YOU A COUPLE NEW BOXES.
6. GO TO THE YOUTUBE ACCOUNT TO WHICH YOU ARE WANTING TO STREAM TO AND CLICK THE "CREATE"

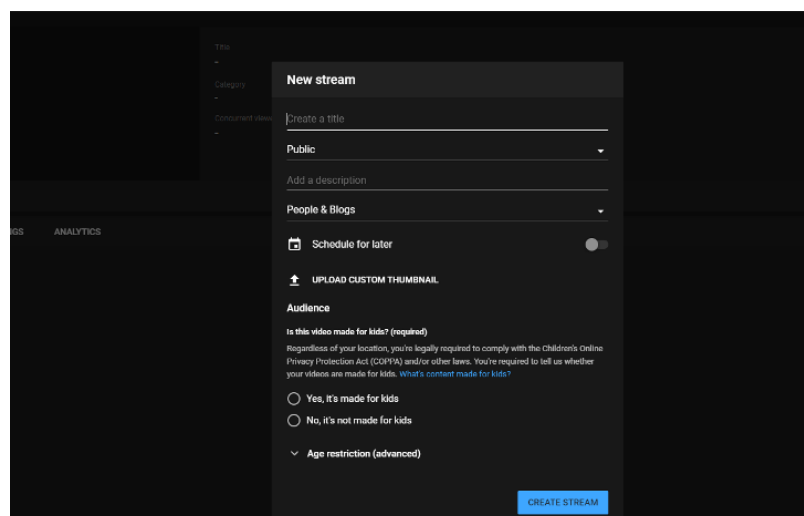
BUTTON IN THE TOP RIGHT-HAND CORNER OF THE SCREEN, THEN CLICK “GO LIVE”.



7. ONCE YOU HAVE DONE THAT, YOU WILL WANT TO CLICK THE “STREAM” OPTION AT TOP LEFT CORNER OF THE SCREEN.

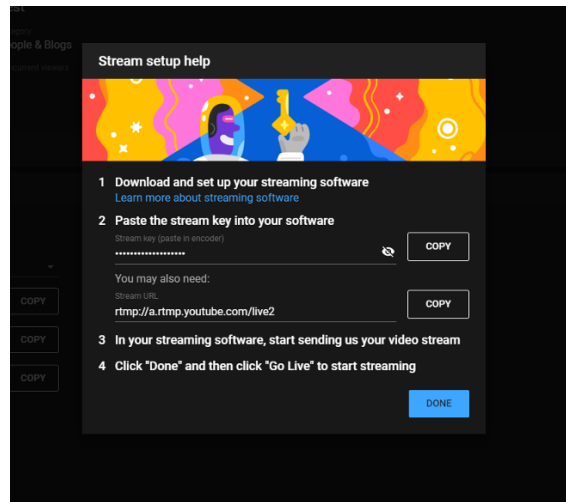


THAT WILL BRING YOU TO A WINDOW LIKE THIS, WHERE YOU ENTER THE INFORMATION FOR YOUR STREAM

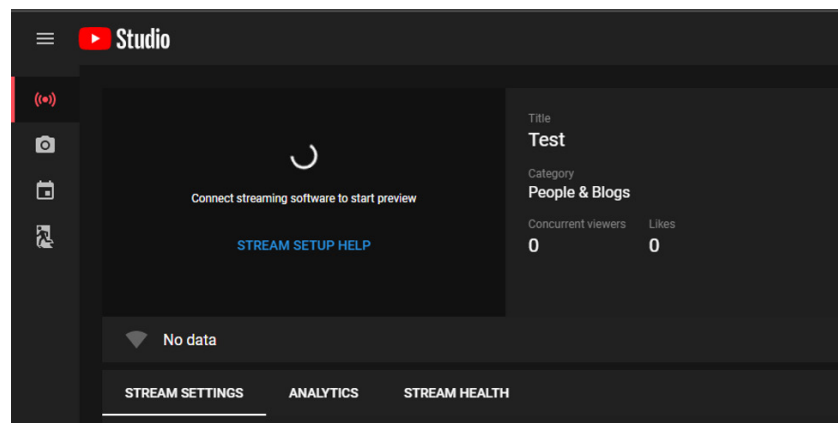


WHEN YOUR INFORMATION IS ENTERED, CLICK “CREATE STREAM” IN THE BOTTOM LEFT.

8. NEXT YOU WILL SEE THIS WINDOW:



9. NEXT, COPY THE URL AND PASTE THAT INTO THE “URL” TEXT BOX ON THE IMPULSE WEB INTERFACE THEN CLICK “APPLY” AT THE BOTTOM OF THE IMPULSE PAGE.
10. THEN, COPY THE STREAM KEY AND PASTE THAT INTO THE “UPLOADING NODE” TEXT BOX ON THE IMPULSE WEB INTERFACE, THEN CLICK “APPLY” AT THE BOTTOM OF THE IMPULSE PAGE.
11. ONCE YOU HAVE SAVED THE SETTINGS BY CLICKING APPLY ON THE IMPULSE, CLICK THE “START STREAMING” BUTTON ON THE IMPULSE WEB INTERFACE. YOU SHOULD SEE A PREVIEW SHOULD SHOW UP IN THE PREVIEW SCREEN ON YOUTUBE. ***THIS MAY TAKE UP TO 60 SECONDS BEFORE YOU SEE ANYTHING.



12. ONCE THE PREVIEW IS AVAILABLE, YOU WILL SEE THE RED “GO LIVE” BUTTON IS AVAILABLE FOR YOU TO CLICK ON THE TOP RIGHT-HAND CORNER OF THE SCREEN. CLICK THAT, AND YOU ARE LIVE!