

Switches Engineered for AV over IP

NETGEAR's ProAV solutions are engineered specifically for AV over IP with an unmatched ease of use, reliability, and cost savings that benefit all networked AV solutions.

NETGEAR
BUSINESS



Zero-touch
install



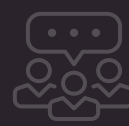
Rapid
deployment



High
reliability



Easy
expandability



Dedicated
engineering
services team



Next business
day replacement

OVERVIEW

NETGEAR's commitment to AV over IP includes a range of products and dedicated support services. Our M4250, M4300 and M4500 series of high-performance, flexible switches are engineered for AV over IP.

NETGEAR Business has led the way for 25 years by successfully enabling more than 50 million businesses worldwide. We stand behind our sales partners and their customers through our community and support systems.

The quality, reach, and value of our products and services is unmatched. NETGEAR Business means solutions that fit your needs and your budget. Our comprehensive portfolio of switches enables you to order exactly the combination of fiber or copper ports you need now with room to expand for the future. Providing the ability to connect any type of AV over IP device, NETGEAR switches offer you flexible speed options from 1 Gigabit up to 100 Gigabits per port!

APPLICATIONS

Video over IP

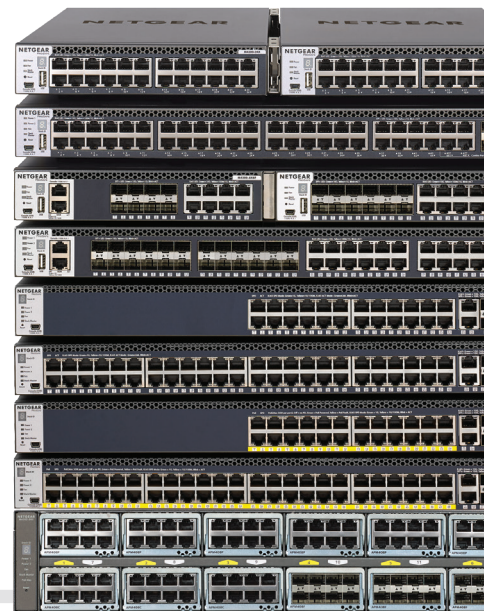
NETGEAR recognizes the explosion of video over Ethernet and has specifically designed products for AV over IP installations. From NETGEAR IGMP Plus™, which allows out-of-the-box functionality for most all multicast installations, to modular switches accommodating copper, fiber, and HDMI inputs, we will work with you to find the right solution at the right price.

The AV GUI on the M4250 series switches uses pre-configured profiles for specific types of AV over IP, like NDI5, NVX, AMX, SDVoE and many more.

Audio over IP

The Pro AV world has adopted IP as their delivery method of choice and NETGEAR is here to help. Our switches provide a range of sizes and mounting methods to accommodate any install - from the university campus to touring road show.

If you are using Dante or AVB/Milan devices in your audio deployment, you can trust that NETGEAR's Pro AV switches are designed to seamlessly integrate into your solution. Easy to use, easy to manage.



CERTIFIED PARTNERS »



NETGEAR SUPPORTS
THE PRO AV INDUSTRY
THROUGH ITS ALLIANCES
AND PARTNERSHIPS
WITH THE FOLLOWING
ORGANIZATIONS:



SUPPORT & DESIGN SERVICES

NETGEAR offers free network design, product selection, and troubleshooting assistance from our AV-trained systems engineers. Our dedicated team spread around the world responds fast to ensure your deployment goes smoothly.

Simply send an email to: ProAVDesign@netgear.com to get started.

ProSUPPORT for Business

The NETGEAR ProSUPPORT for Business offerings provide you with peace of mind by extending and enhancing the standard warranty or support coverage included with your product purchase.

With ProSUPPORT, you get 24/7 direct access to NETGEAR technical support engineers who can rapidly resolve technical issues both big and small. Connect with the people that have built your products and build the relationship that will contribute to your business success.



PRO AV TECHNICAL TRAINING

At NETGEAR, we believe in empowering you with the knowledge to succeed. Our free online Training Academy provides a wealth of resources to learn more about AV over IP and general networking.

And for those looking for CTS credits, some of our courses offer coveted AVIXA renewal credits.

Start learning today: www.netgear.academy

PRO AV SWITCH FAMILIES



M4250 MANAGED SWITCHES

The new AV Line of M4250 switches are built for 1G AV over IP installations and designed for a clean integration with traditional rack-mounted AV equipment.

www.netgear.com/au/m4250

M4300 MANAGED SWITCHES

NETGEAR's M4300 Series of 1G and 10G fully managed switches are designed for any AV over IP installation. A broad range of sizes and capabilities means we have a switch for any application.

www.netgear.com/au/m4300



M4500 MANAGED SWITCHES

NETGEAR's M4500 Series of 10G and 100G fully managed switches are designed to work as the core switch in AV over IP environments to aggregate large numbers of multicast AV streams.

www.netgear.com/au/m4500